

LOUISIANA DEPARTMENT OF EDUCATION



---

**eSER Go LIVE**  
**July 11, 2022**

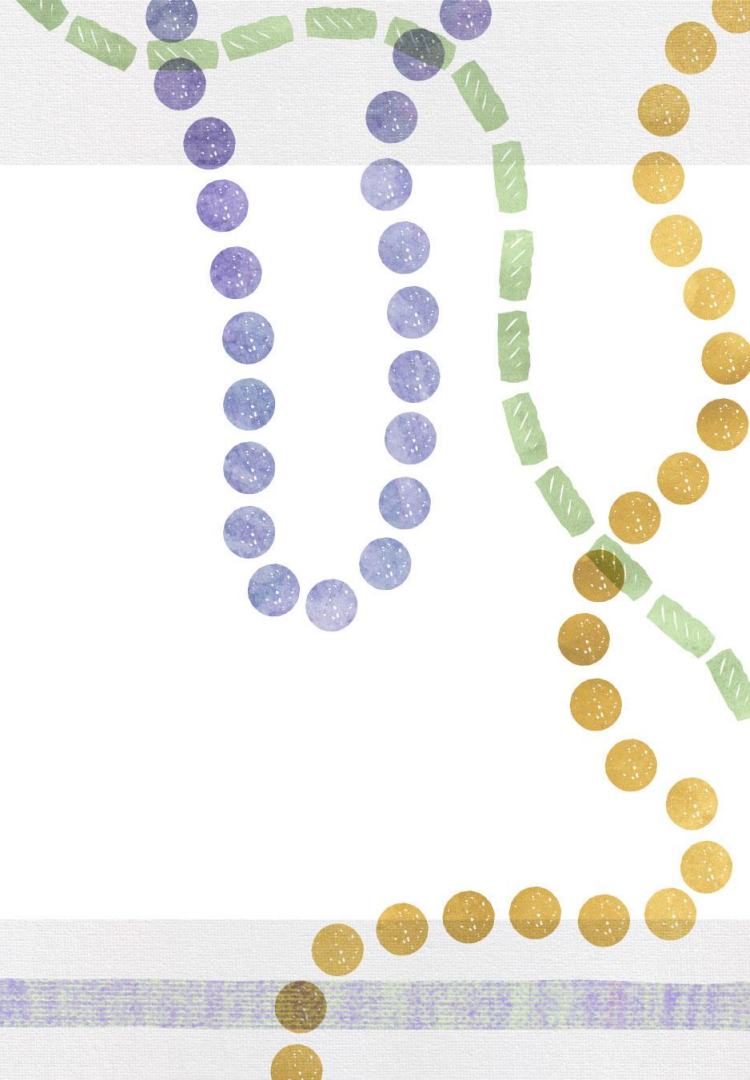
---

# Agenda

- Rolling over from SER to eSER
- Next Steps



**Rolling over from SER to eSER**



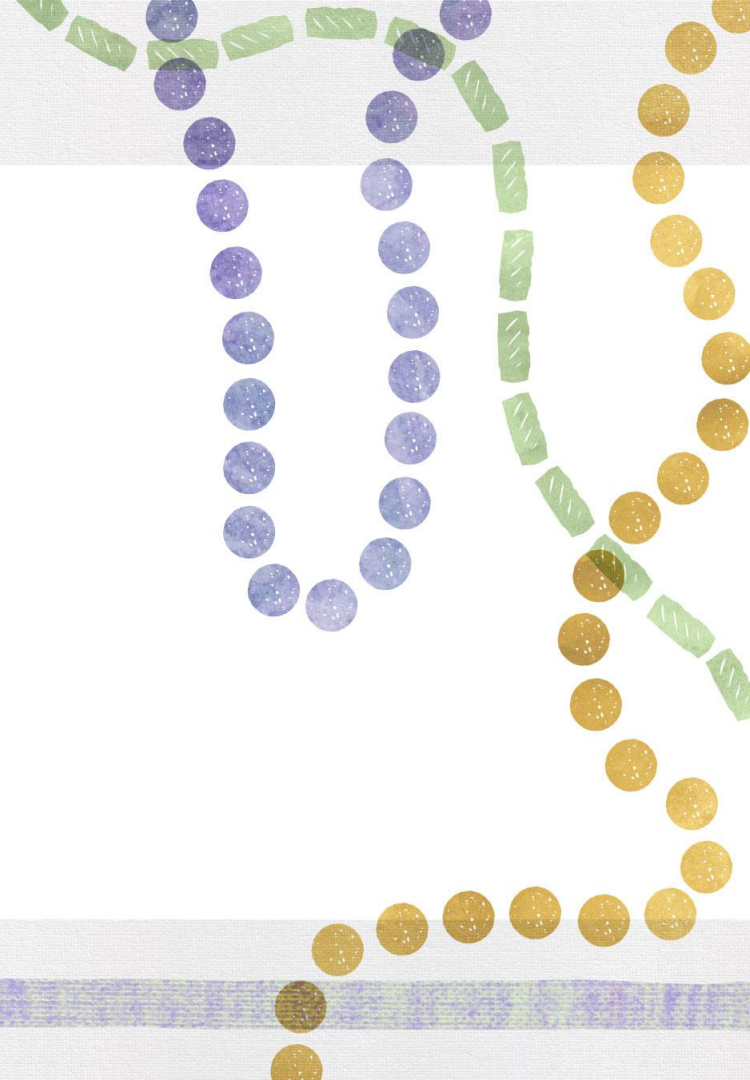
# Legacy SER to eSER Data Rollover

- **July 24 at 11:59 p.m.** | Legacy SER will be made to view only. No further data entry can be made at this point.
- **July 25-31** | LDOE and the vendor will transfer all data and conduct data quality checks on the transferred data.
  - All data saved in SER prior to 11:59 p.m. on July 24 will be transferred to the enhanced SER system including IEPs in draft form.
  - Data less than 7 years old will be migrated to eSER. Data older than 7 years will be stored and will be accessible by request.
  - Users will be able to search for students and view all data; however, will receive an error if data entry is attempted.
- **August 1** | The enhanced version of SER will go live. The same URL will be used for the enhanced SER system as the legacy SER system. Data entry may resume.

# Medicaid Instructions

- SMI Medicaid Importer functionality that was added to SER to allow users to upload a file of all students to determine if they are Medicaid eligible will **NOT** be included in eSER.
  - eScholar Direct Match will be utilized for Medicaid matching in place of Medicaid Importer beginning with the 2022-2023 school year.
- SMD Medicaid Admin, Provider, and Reader functionality **WILL** be included in eSER.

## Next Steps



## Next Steps Future eSER Users

- Security Coordinators ensure they are set up ([See One Pager](#))
- Ensure staff have usernames and passwords setup and linked to their staff ID ([See Guide](#))
- Once eSER goes live you will be able to login to eSER <https://sers.doe.la.gov/ser>
- Reach out to [Systemsupport@la.gov](mailto:Systemsupport@la.gov) with any EdLink Security concerns

# Overview of Key Dates

- **June 20:** First weekly eSER Go Live Informational and Q&A Session
  - Additional dates: **June 20, June 27, July 5, July 11, July 18, July 25, August 1, August 8**
- **June 20:** Security Coordinator Setup [One-Pager](#) and TAS Report Instructions release
- **July 5:** Connecting Staff ID and Username [Guide](#) release
- **August 1:** Go Live!

# eSER Go Live Informational and Q&A sessions

- LDOE has begun holding weekly eSER Go Live Informational and Q&A sessions every Monday from 2:00 p.m. to 3:00 p.m.
- All future eSER users should attend or have a school or school system representative attend who will filter information to all users.
- Zoom Information:
  - **Registration:** <https://ldoe.zoom.us/meeting/register/tJUucOiqqzwrGtK1U3E1YHfE87QKXzV9WsOa>
  - **Meeting Link:** <https://ldoe.zoom.us/j/91371257106>
  - **One tap mobile:** +14702509358,,95433357770# US (Atlanta)

**Q and A**

